

CERTIFIED LAND CORNER RECORDATION

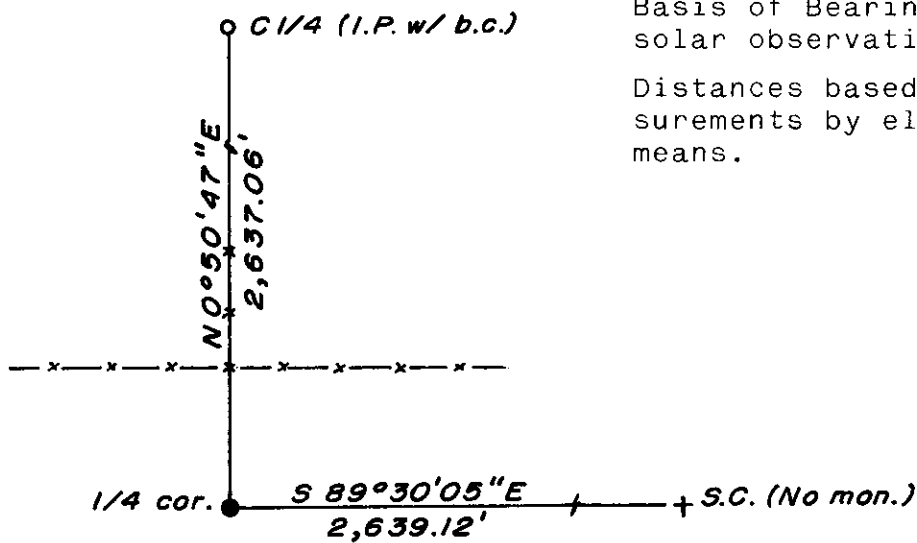
DESCRIPTION OF CORNER EVIDENCE FOUND, AND ORIGINAL RECORD (If known)

LOCATION Found 8" x 8" x 8" sandstone, in place.
 ¼ S. 2 G.L.O. record - 1871 contract survey by Edwin James -
 ¼ S. 11 Set a Sand Stone 16 x 9 x 7 for quarter section corner.
 T.13N., R.64W.
 6th P.M.

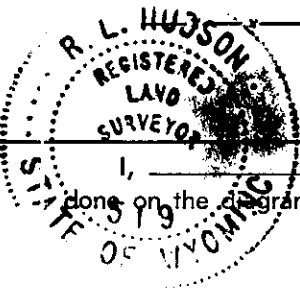
DESCRIPTION OF MONUMENT AND ACCESSORIES ESTABLISHED TO PERPETUATE THE ORIGINAL LOCATION OF THIS CORNER:

At the corner: No monument set
 Accessories: None

SKETCH, WITH COURSE AND DISTANCE TO ADJACENT CORNER IF DETERMINED IN THIS SURVEY.
 (May Sketch or Paste Reproduction on Reverse Side.)



Basis of Bearing - By solar observation.
 Distances based on measurements by electronic means.



I, R. L. Hudson certify that I have carefully performed ~~or reviewed~~ the work done on the diagrammed corner as reported on this recordation form and approve the same.

R. L. Hudson Wyoming L.S. No. 519
 Signature of Surveyor Registration No.

STATE OF WYOMING,
 Office of Clerk and Recorder,
 County of Taramie

This "corner record" was filed for record on the 18 day of July, 1977, was noted on the cross-index plat and is assigned page No. _____, in book No. _____.

Janet C Whitehead
 County Official

Cross Index No. _____	T. _____	R. _____	Mer. _____
<u>E 19</u>	T. <u>13</u>	R. <u>64</u>	Mer. _____
_____	T. _____	R. _____	Mer. _____
_____	T. _____	R. _____	Mer. _____
_____	T. _____	R. _____	Mer. _____
_____	T. _____	R. _____	Mer. _____

446774

Photographed

Indexed

Posted

Assessor

1914